



FWI51

## B&C ID.501 /women

The micro-fleece Basic by B&C

B&C  
COLLECTION

### Composition

100% polyester anti-pilling micro-fleece

### Size

XS, S, M, L, XL, 2XL, 3XL\*

### Packing

5 pcs/pack & 15 pcs/carton

### Weight

280 g/m<sup>2</sup>

### Color Note

\*Colours available in 3XL: Black, Navy, Red, Royal Blue, Dark Grey, Forest Green

### Details

The B&C ID.501 /women is the perfect basic 100% polyester anti-pilling full zip micro-fleece, with fashionable attitude and feminine cut. This full-zip style features great details including a tone-on-tone zip with zip pull, zipped front pockets and a flattering cut, it embodies the essential contemporary look, available in 9 colours from classic to bright and 8 sizes.

For the perfect Duo, pair it with the B&C ID.501.

### The micro-fleece Basic by B&C for women

- Tone-on-tone full zip opening with zip pull
- Necktape
- 2 front pockets with zips and zip pulls
- Open hem
- Feminine cut
- Essential contemporary look

### Care instructions



All our products are tested and approved using all main print techniques.



DUO  
CONCEPT

Want the same style for everyone?

**Try the B&C ID.501**

Colors

001  
WHITE

002  
BLACK

003  
NAVY

004  
RED

230  
PUMPKIN ORANGE

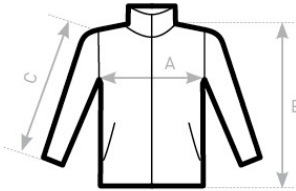
441  
ATOLL

450  
ROYAL BLUE

670  
DARK GREY

882  
FOREST GREEN

Size Guide



B&C ID.501 /WOMEN FW I51		XS	S	M	L	XL	XXL	XXXL
A	HALF CHEST	43,5	46,5	49,5	52,5	55,5	58,5	61,5
B	BODY LENGTH AT CB	60	61,5	63	64,5	66	67,5	69
C	SLEEVE LENGTH	59	60	61	62	63	64	65