

**DUO**  
**CONCEPT**

Want the same style for everyone?

**Try the B&C Crew Bomber /women**

JM961

# B&C Crew Bomber /men

Padded and ergonomically designed bomber jacket



### Composition

Outer layer: 100% polyester pongee  
Inner layer: 100% polyester quilted taffeta

### Size

S, M, L, XL, 2XL, 3XL

### Packing

1 pc/pack & 15 pcs/carton

### Details

Thanks to warm padding and bomber style, the B&C Crew Bomber /men is your versatile option for cooler weather. Zip-pockets and a standing collar make it functional enough for everyday.

Thanks to premium cotton touch elasticated wrist and bottom hem, it offers enhanced comfort. This middle weight bomber style is waterproof and windproof to keep you working comfortably and effectively whatever the weather.

Its easy access for decoration hidden zip opening, elevates this iconic jacket to a perfect shop window with your embroideries or prints.

For the perfect DUO, pair it with the B&C Crew Bomber /women.

### Protection

- Waterproof (5000 mm) and windproof outer shell.
- Quilted padding for extra warmth.
- Standing collar, full length internal stormflap and rib on cuffs and hem ensure wind protection.
- Forward shoulder seams for better comfort and water protection.
- Ergonomic adjustable hood concealed in collar with elasticated cord and two easily adjustable stoppers.

### Style & Fit

- Middleweight bomber style (jacket) with cotton feel heavy rib on cuffs and botton hem.
- Ergonomically designed for a comfortable fit.
- Contemporary and robust look, designed to support corporate and promotional needs.
- Matt fabric with soft handfeel for comfort and a premium look.
- Tone-on-tone, high quality SBS zippers
- 2 zipped hand pockets with overlap
- 1 inner wallet pocket with closing tabs.

### Made to last

- Double needle topstitching for extra durability.
- Cuffs and hem in heavy polyester rib with elastane for better shape retention and durability.
- Long lasting high quality tone-on-tone SBS zipper.

### Care instructions



All our products are tested and approved using all main print techniques.

Colors

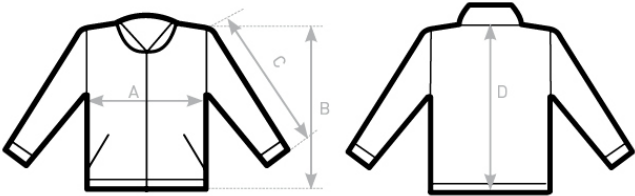
002  
BLACK

003  
NAVY

004  
RED

670  
DARK GREY

Size Guide



B&C CREW BOMBER /MEN JM961	XS	S	M	L	XL	XXL	XXXL
A HALF CHEST	-	56	59	62	65	68	71
B BODY LENGTH FROM NECK POINT	-	68	70	72	74	76	78
C SLEEVE LENGTH	-	66	67,5	69	70,5	72	73,5
D CENTER BACK LENGTH	-	66,5	68,5	70,5	72,5	74,5	76,5