

JM963

B&C Trooper /men

Trendy lightweight bomber jacket

B&C
COLLECTION



Composition

Outer layer: 100% polyester 210T taffeta
Body lining: 100% polyester mesh
Sleeves lining: 100% polyester taffeta

Size

S, M, L, XL, 2XL, 3XL

Packing

5 pcs/pack & 30 pcs/carton

Details

Make an impact with the B&C Trooper /men bomber jacket. A new take on the essential bomber with its outstanding colour offer. This lightweight bomber offers a contemporary colour range with the most fashionable contrasted inner mesh lining.

Thanks to its fashionable bomber cut and high-quality fabric, this lightweight jacket is water-repellent, breathable and windbreaker. It features a standing collar and cotton feel 2X2 qualitative rib on cuffs and hem that will ensure comfort and style while its easy accesses for decoration ensure great brand visibility.

For the perfect duo, pair it with the B&C Trooper /women.

Protection

- Showerproof AC coating, breathable and windproof outer shell.
- Diamond mesh lining improves breathability and comfort.
- Ergonomic hood (adjusted with elastic at the top) concealed in the collar.
- Contemporary cotton feel heavy rib on cuffs and bottom hem for wind protection.
- Forward shoulder seams for better comfort and water protection.

Style & Fit

- Light weight bomber style with cotton feel heavy rib on cuffs and bottom hem.
- The combination of a plain outer colour with contrasting inner lining adds a modern appearance, creating a high value perception whilst not hindering identity application.
- Trendy and "retail" cut for a contemporary image.
- Soft handfeel fabric adds premium perception.
- Wide colour choice will support any idea and/or identity and create strong visibility when needed.
- Bomber shape collar.
- Self fabric inner collar.
- 2 zipped hand pockets
- 1 inner wallet pocket with closing tabs.

Made to last

- Reinforced topstitched seams for extra durability.
- Polyester heavy rib with elastane for better shape retention and durability.
- Long lasting high quality tone-on-tone SBS zipper.

Care instructions



All our products are tested and approved using all main print techniques.



DUO
CONCEPT

Want the same style for everyone?

**Try the B&C Trooper
/women**

Colors

001
WHITE

002
BLACK

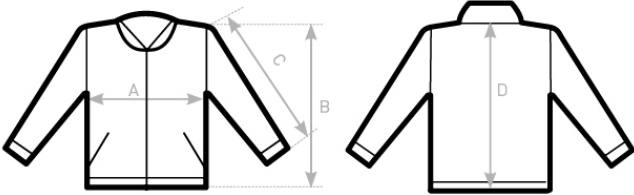
003
NAVY

004
RED

450
ROYAL BLUE

732
REAL GREEN

Size Guide



B&C TROOPER /MEN JM963	XS	S	M	L	XL	XXL	XXXL
A HALF CHEST	-	56	59	62	65	68	71
B BODY LENGTH FROM NECK POINT	-	68	70	72	74	76	78
C SLEEVE LENGTH	-	66,5	68	69,5	71	72,5	74
D CENTER BACK LENGTH	-	66,5	68,5	70,5	72,5	74,5	76,5