

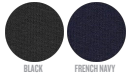


#### WHITES



NATURAL RAW

#### COLORS



BLACK

FRENCH NAVY

#### ESSENTIAL HEATHERS



HEATHER GREY

UNISEX ZIP-THRU SWEATSHIRTS

## STSU953 - LOCKER HEAVY

### The unisex heavy relaxed zip-thru sweatshirt

#### Relaxed Fit

- Set-in sleeve
- Double layered hood in self fabric
- Round drawcords in matching body colour with metal tipping
- Metal zipper and eyelets
- Herringbone tape at inside back neck and at inside of zipper
- Self fabric half moon at back neck
- 2x2 rib at sleeve hem and bottom hem
- Armhole, sleeve hem and bottom hem with twin needle topstitch
- Kangaroo pocket at front

#### Combo options



Radder Heavy

Slammer Heavy

Shell : Brushed , 100% Cotton - Organic Ring Spun Combed , Fabric washed ,  
Light sueded , 500 GSM

#### Printing Specifications

For suitable print techniques, please download our printing guide

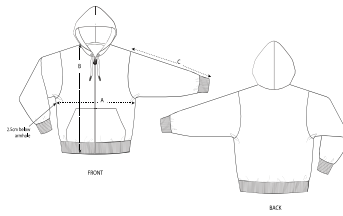
#### Certifications & memberships



#### Wash Instructions

Wash similar colours together, no ironing on print, wash and iron inside out. Close zip before washing.





| SIZES |               | XXS  | XS   | S    | M  | L    | XL | XXL  | 3XL  |
|-------|---------------|------|------|------|----|------|----|------|------|
| A     | Half Chest    | 51.5 | 54   | 56.5 | 59 | 62   | 65 | 68   | 71   |
| B     | Body Length   | 64   | 66   | 68.5 | 74 | 77   | 79 | 81   | 83   |
| C     | Sleeve Length | 58.5 | 59.5 | 62.5 | 65 | 66.5 | 68 | 69.5 | 69.5 |

### PACKING

| SIZES   | XXS | XS | S  | M  | L  | XL | XXL | 3XL |
|---------|-----|----|----|----|----|----|-----|-----|
| PCS/BAG | 5   | 5  | 5  | 5  | 5  | 5  | 5   | 5   |
| PCS/BOX | 10  | 10 | 10 | 10 | 10 | 10 | 10  | 10  |